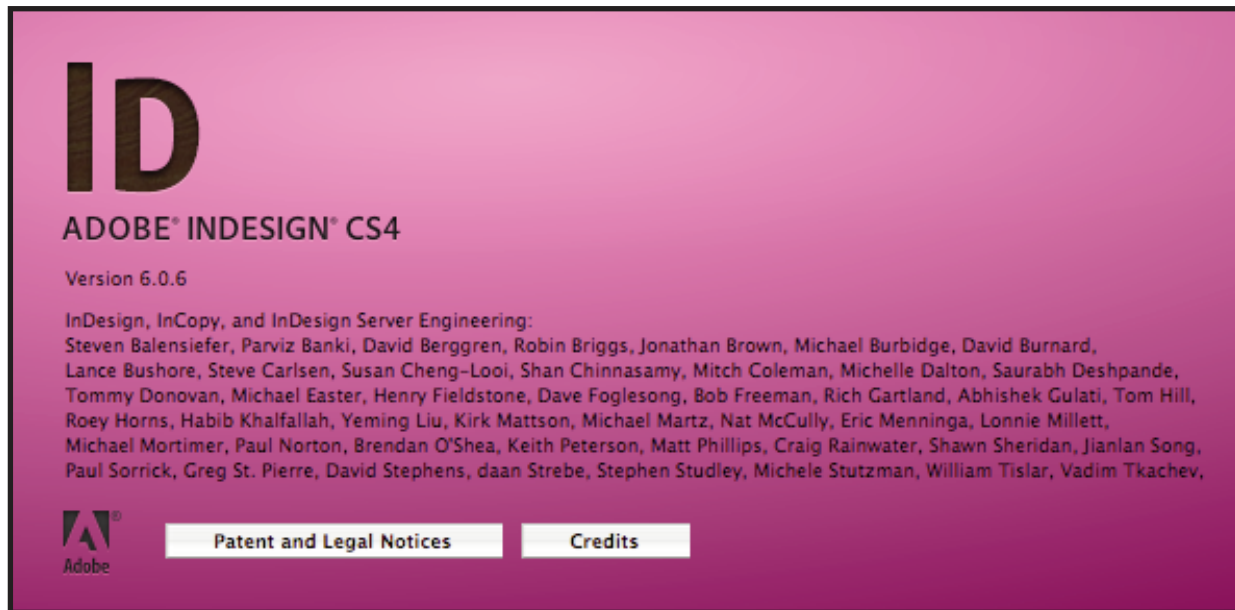


PostScripting Instructions

One-Color and Two-Color

Adobe InDesign CS4



Setting and Preferences

The following instructions will demonstrate how to create a reusable printer style with all of your settings. Use these instructions to write PS files from InDesign CS4.

InDesign CS4 Print PostScript

The generation of PostScript from InDesign CS4 requires two basic steps:

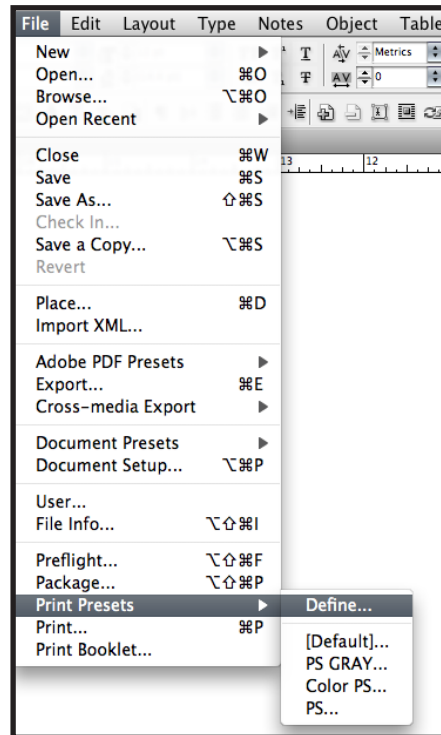
Step 1. Creation of a Print Preset within InDesign with adjusted settings

Step 2. Generating PostScript using the predefined Print Preset

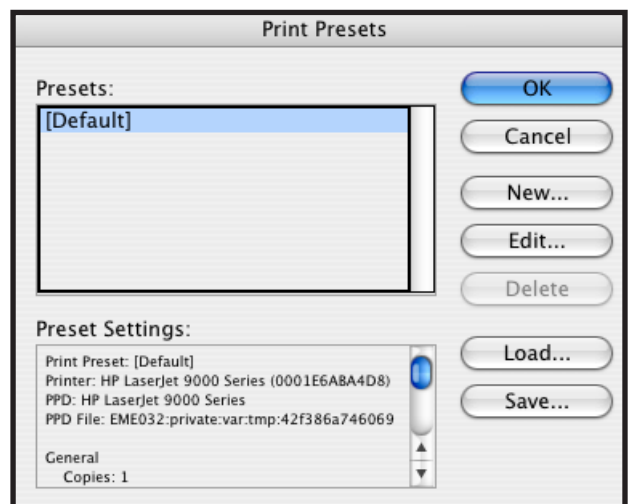
Step 1.

Create a New Print Preset within InDesign CS4:

- Open InDesign
- Select *File>Print Presets>Define...*



- Select the *New* button in the Print Presets dialog box
- Name the Print Preset appropriately to identify it as settings to produce PostScript.

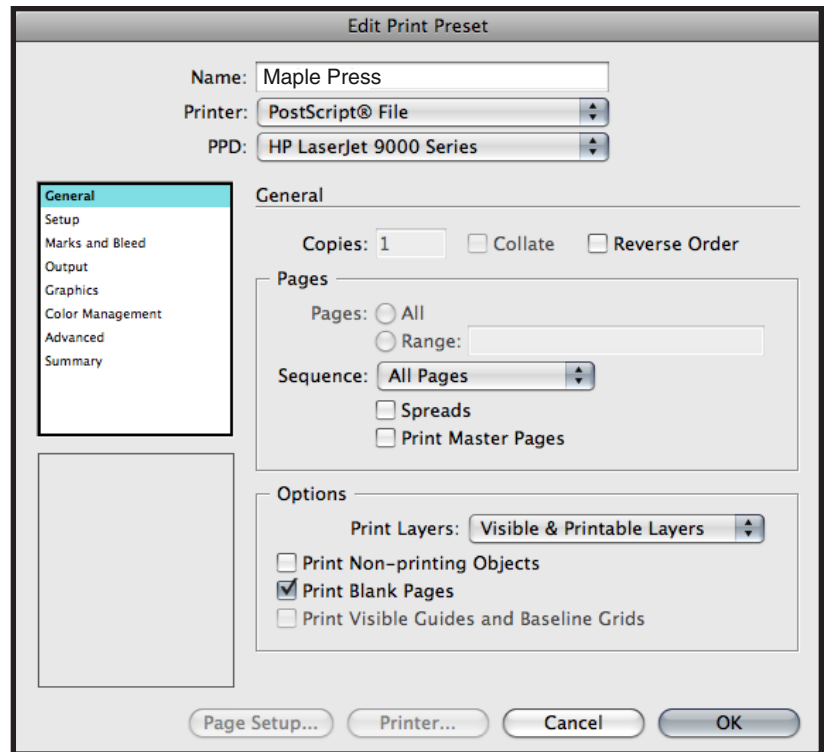


General:

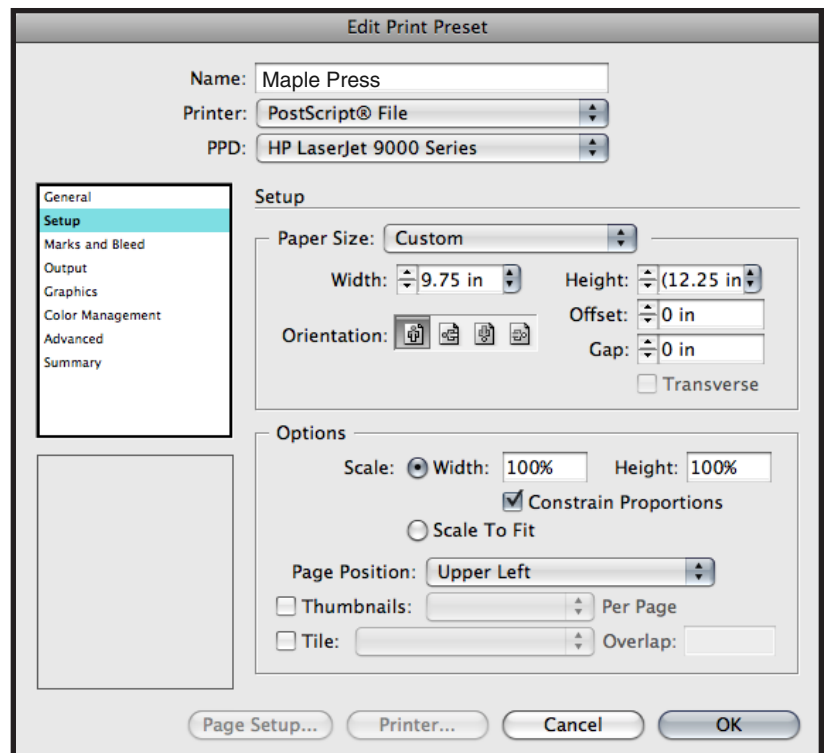
- Select *Printer*: PostScript File
- Select *PPD*: PostScript outputting device
- Select *Copies*: 1
- Select *Sequence*: All Pages (or other options as appropriate)
- Select *Print Blank Pages*

We are showing an HP Laserjet 9000 Series which is a Postscript device; the driver for this device is readily available. You can substitute it with other PostScript devices.

We are focused on making our instructions as user-friendly as possible without requiring that you create a special device for Maple Press.

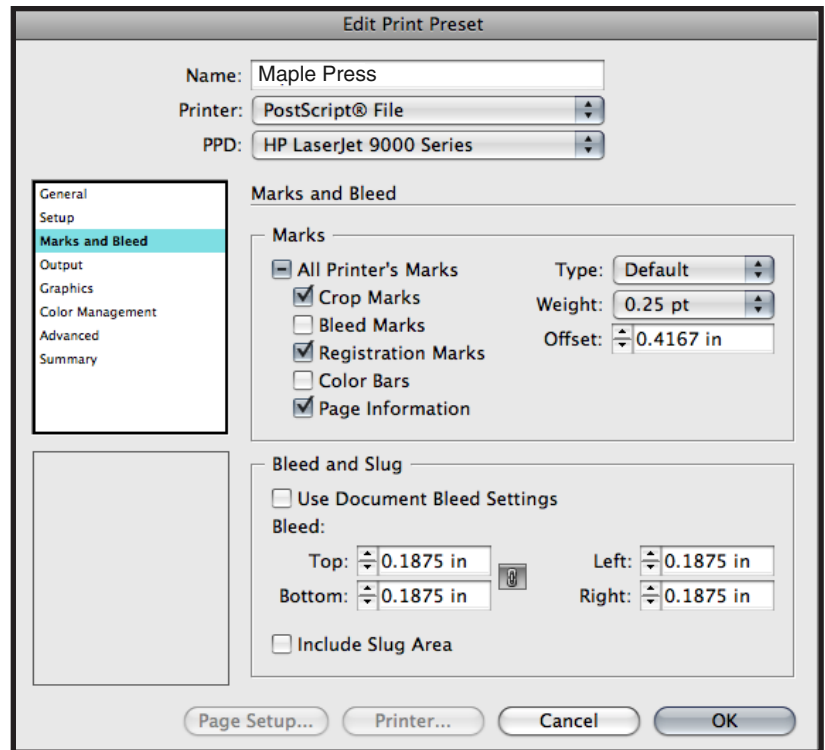
**Setup:**

- Select *Paper Size*: Custom (This allows InDesign to base the width and height on the defined document trim size, including marks and bleed)
- Select *Orientation*: Portrait (Left icon)
- Select *Offset*: 0 inches
- Select *Gap*: 0 inches
- Select *Scale*: *Width*: 100%, *Height*: 100%
- Select *Constrain Proportions*
- Select *Page Position*: Upper Left



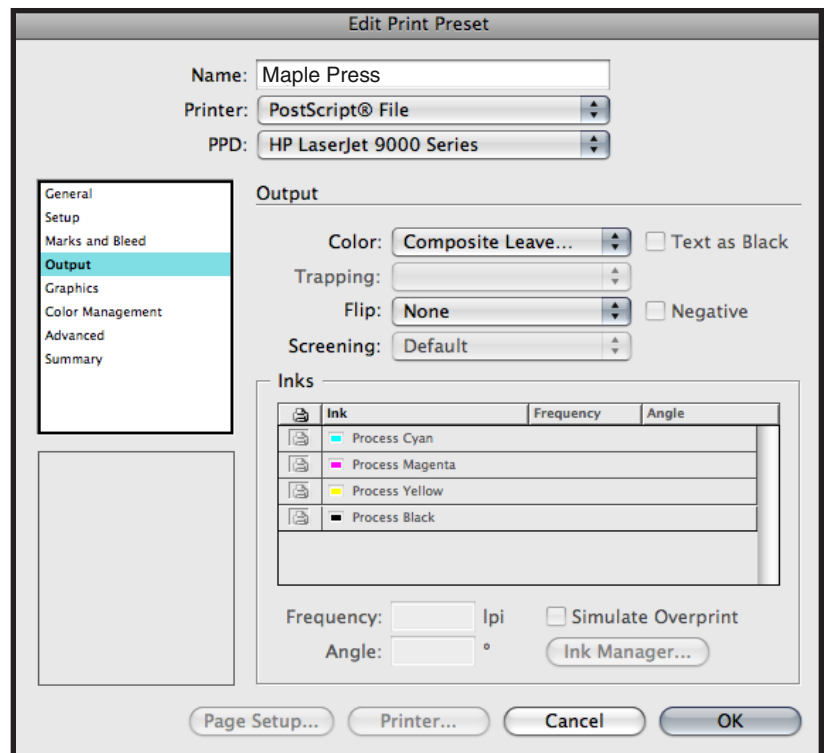
Marks & Bleed:

- Select *All Printer's Marks*
- Select *Crop Marks*
- Select *Registration Marks*
- Select *Page Information*
- Select *Type*: Default
- Select *Weight*: .25 pt
- Select *Offset*: .4167 inches
- Select *Bleed*: *Top*: .1875 inches
Inside: .1875 inches
Bottom: .1875 inches
Outside: .1875 inches



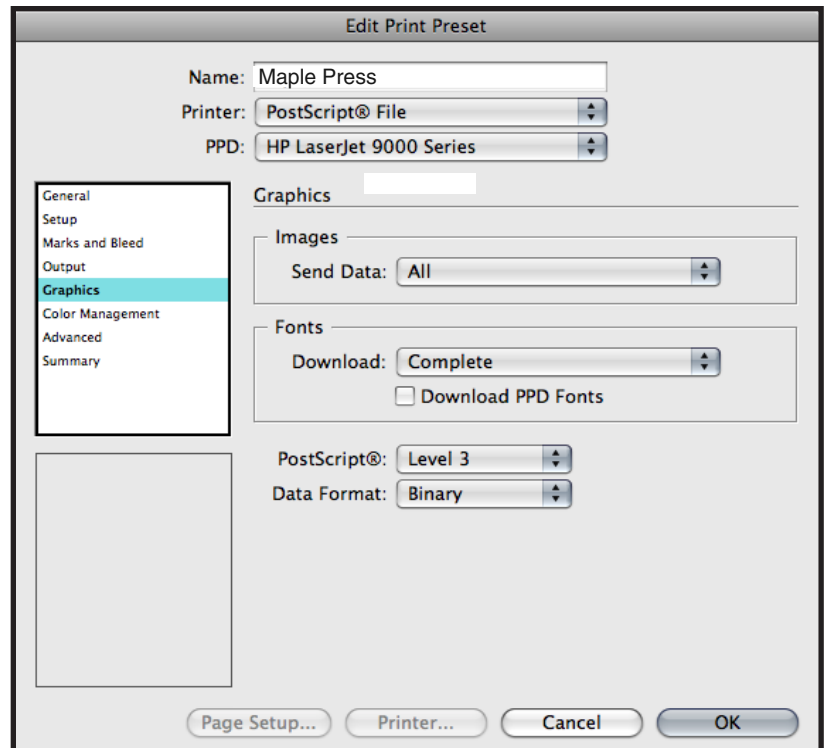
Output:

- Select *Color*: Composite Leave Color Unchanged (suitable for process and spot color work color work)
- Select *Flip*: None
- Select *Screening*: Default
- *Inks*: Review list to verify no unintended colors are included (simply disabling output of undesired colors could result in elements missing from final file)



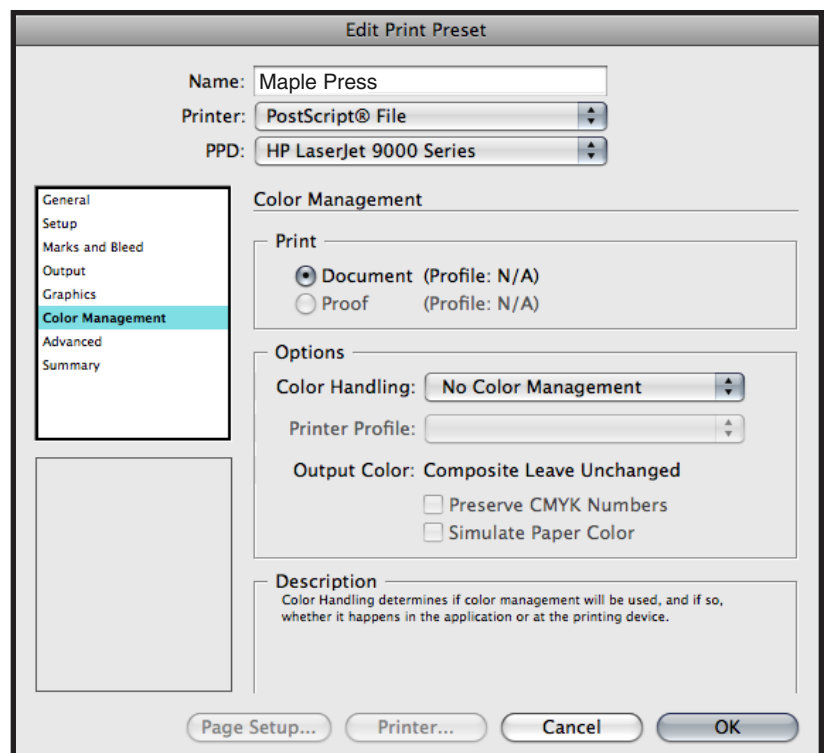
Graphics:

- Select *Send Data*: All
- Select *Download*: Complete
- Deselect *Download*: PPD Fonts
- Select *PostScript*: Level 3
- Select *Data Format*: Binary



Color Management:

No selections needed in this window, due to the output setting to “leave color unchanged.” Other settings could result in final file being translated to an unwanted color space.



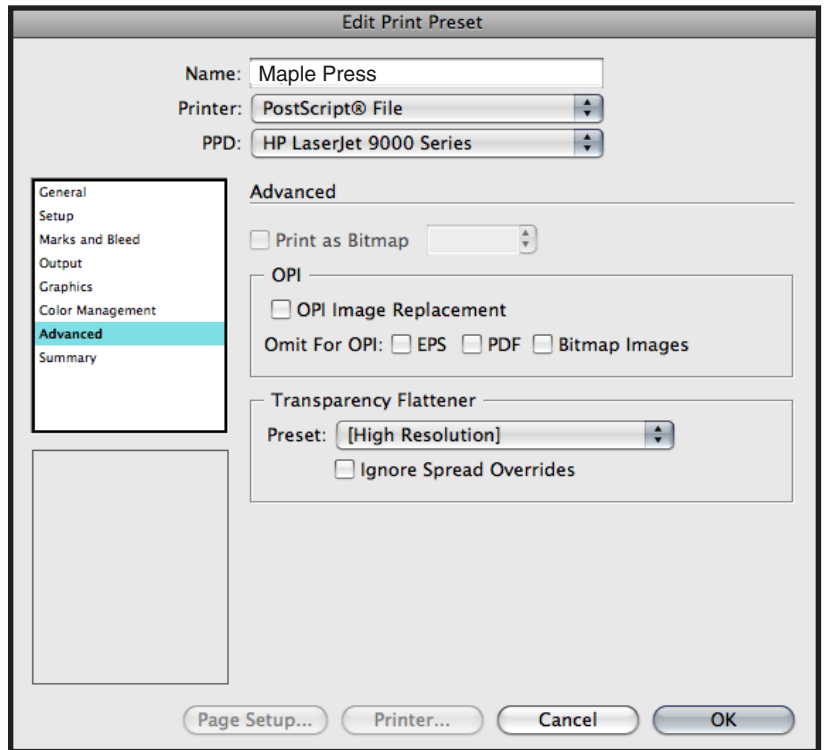
Advanced:

Transparency Flattener

- Select *Preset*: High Resolution

Step one of selecting Print Presets is now complete.

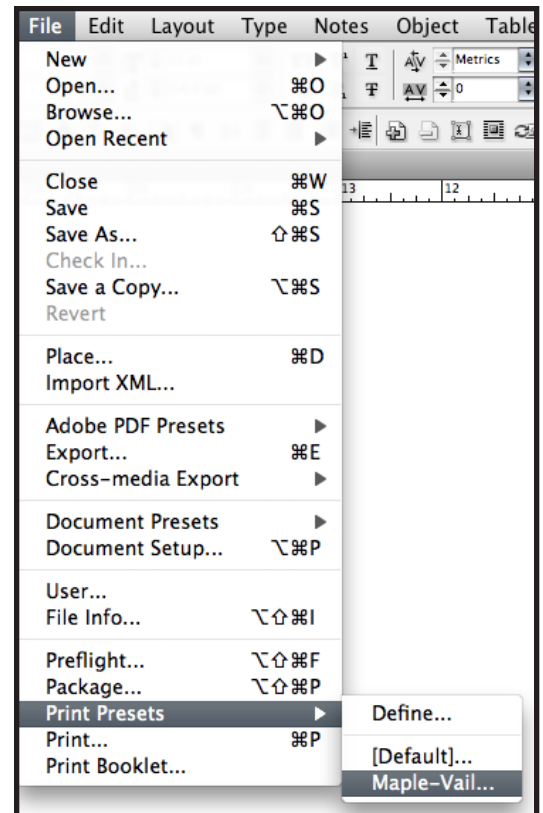
- Select *OK* to save new settings.



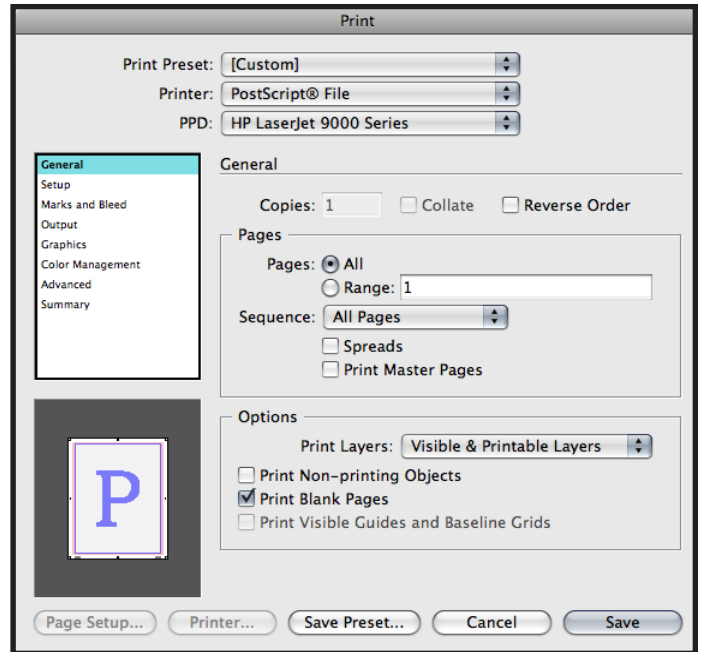
Step 2.

Writing a Postscript file using Predefined Print Preset:

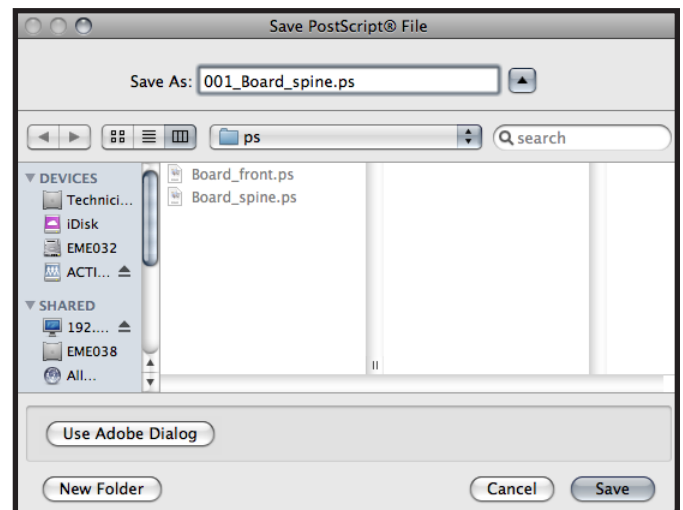
- With your InDesign file open, select the Print dialog box within InDesign, select Print Preset defined during the previous steps. File>Print Presets>Maple Press



- The preset loads and displays all the settings. Do not change any settings at this point. Just click on the Save button.



- Name the PostScript file and select the destination folder.



Creating a PDF file from Postscript:

Once the PostScript file is created, follow recommended standards for Distiller at the following web site link:
<http://www.maplepress.com/prepress/DistillingInstructions.html>