

# PostScripting Instructions

## One-Color and Two-Color



### Setting and Preferences

The following instructions will demonstrate how to create a reusable printer style with all of your settings. Use these instructions to write PS files from InDesign CS5.

# InDesign CS5 Print PostScript

The generation of PostScript from InDesign CS5 requires two basic steps:

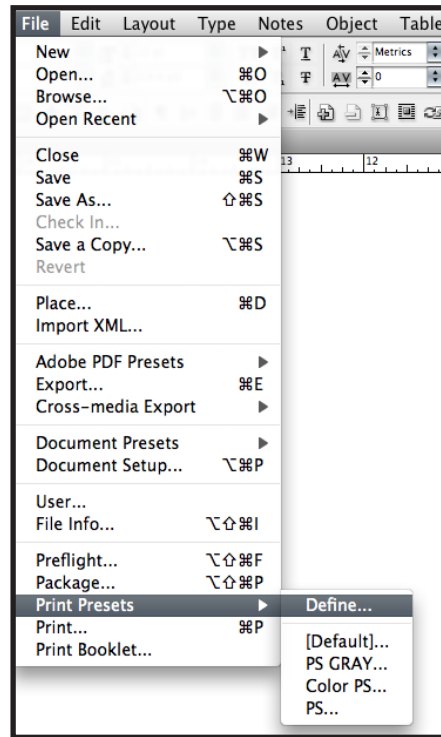
**Step 1.** Creation of a Print Preset within InDesign with adjusted settings

**Step 2.** Generating PostScript using the predefined Print Preset

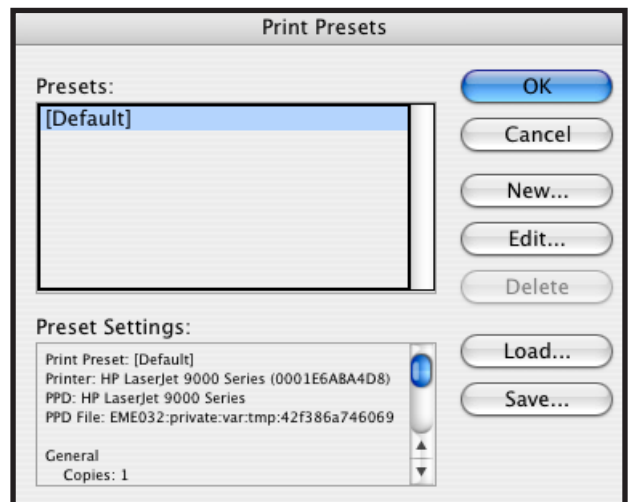
## Step 1.

Create a New Print Preset within InDesign CS5:

- Open InDesign
- Select *File>Print Presets>Define...*



- Select the *New* button in the Print Presets dialog box
- Name the Print Preset appropriately to identify it as settings to produce PostScript.

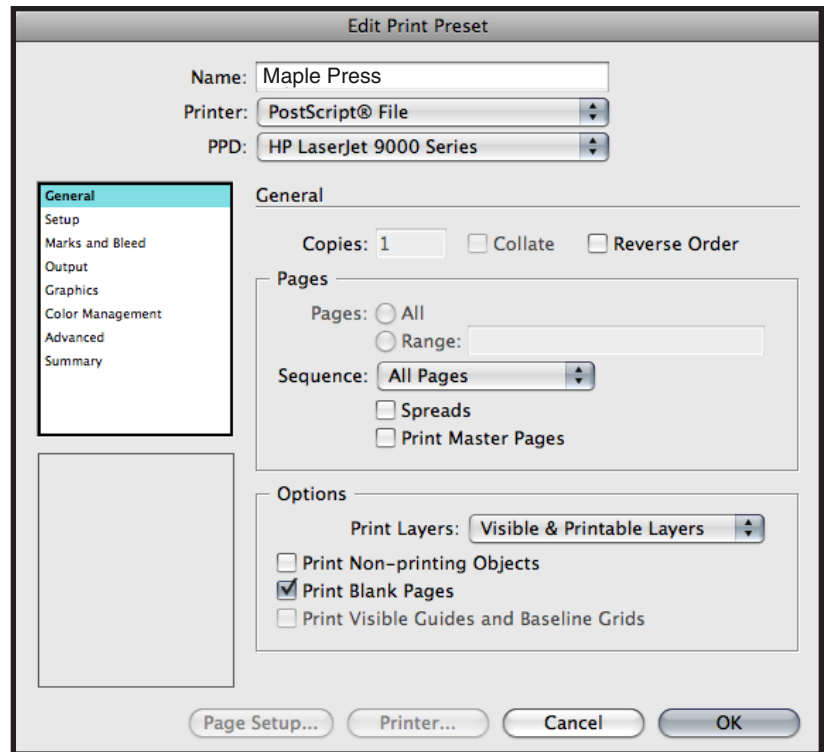


## General:

- Select *Printer*: PostScript File
- Select *PPD*: PostScript outputting device
- Select *Copies*: 1
- Select *Sequence*: All Pages (or other options as appropriate)
- Select *Print Blank Pages*

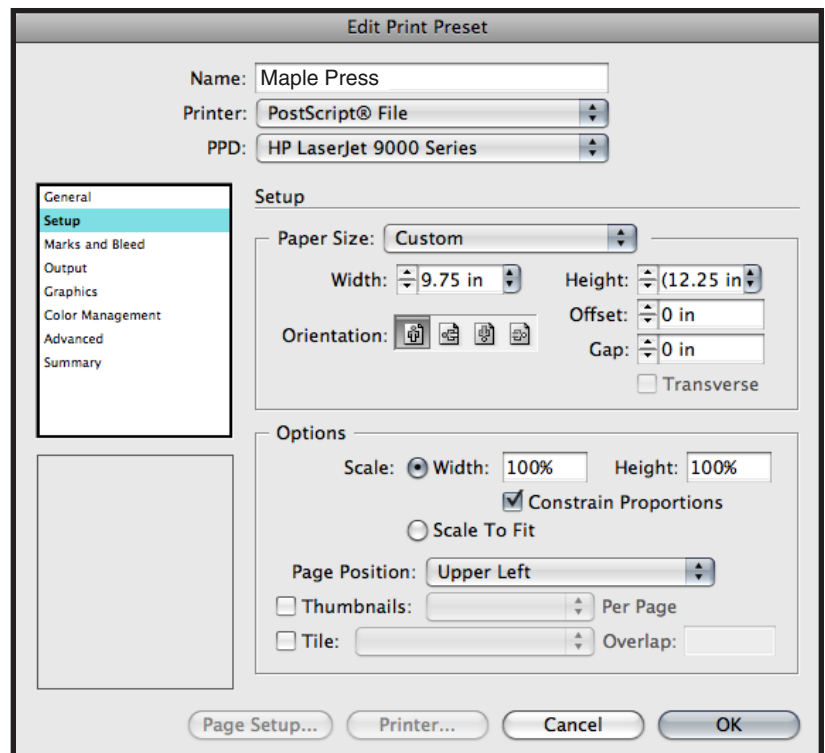
We are showing an HP Laserjet 9000 Series which is a Postscript device; the driver for this device is readily available. You can substitute it with other PostScript devices.

We are focused on making our instructions as user-friendly as possible without requiring that you create a special device for Maple Press.



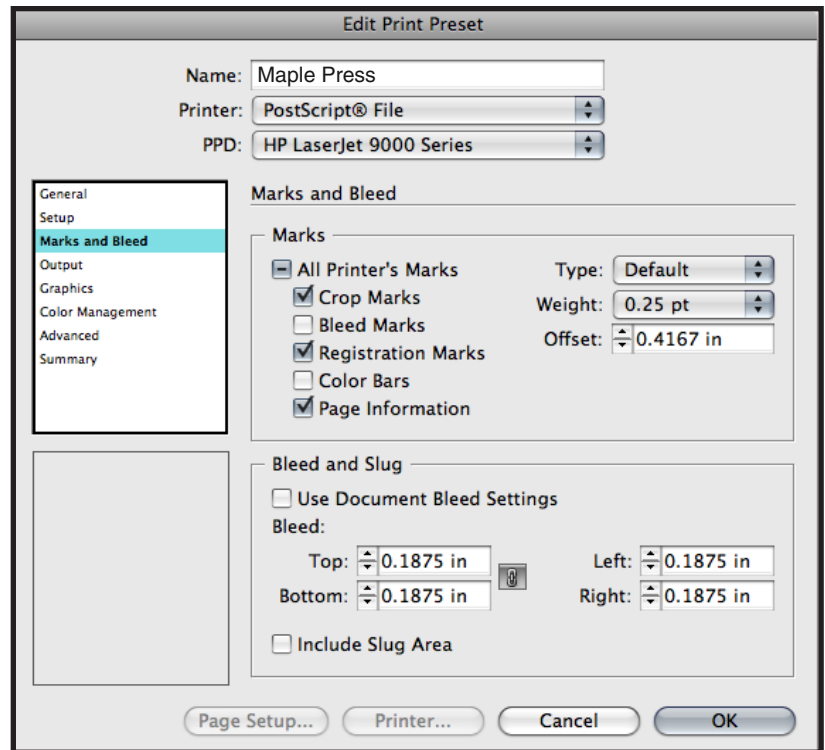
## Setup:

- Select *Paper Size*: Custom (This allows InDesign to base the width and height on the defined document trim size, including marks and bleed)
- Select *Orientation*: Portrait (Left icon)
- Select *Offset*: 0 inches
- Select *Gap*: 0 inches
- Select *Scale*: *Width*: 100%, *Height*: 100%
- Select *Constrain Proportions*
- Select *Page Position*: Upper Left



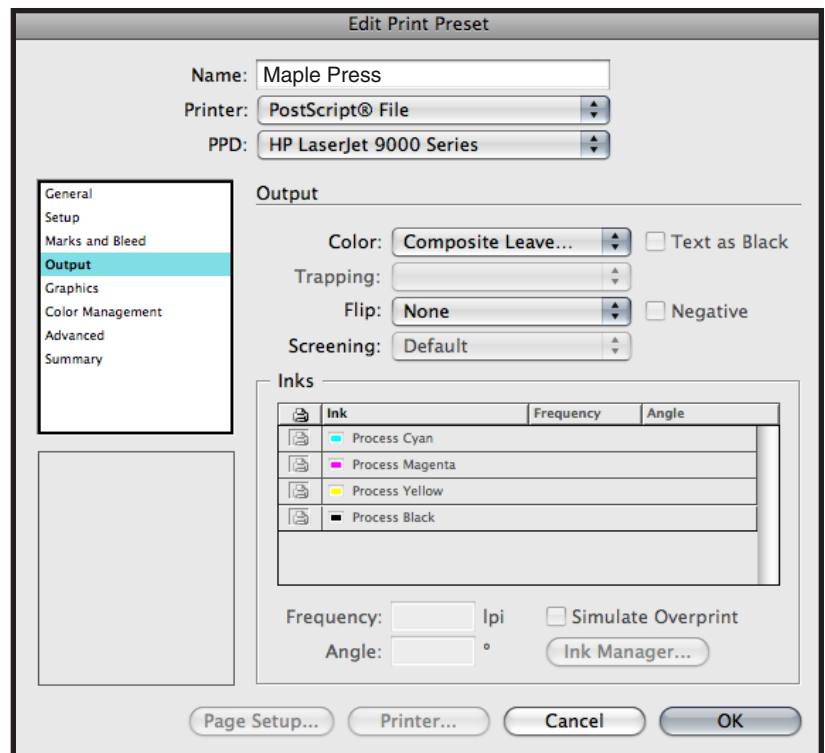
## Marks & Bleed:

- Select *All Printer's Marks*
- Select *Crop Marks*
- Select *Registration Marks*
- Select *Page Information*
- Select *Type*: Default
- Select *Weight*: .25 pt
- Select *Offset*: .4167 inches
- Select *Bleed*: *Top*: .1875 inches  
*Inside*: .1875 inches  
*Bottom*: .1875 inches  
*Outside*: .1875 inches



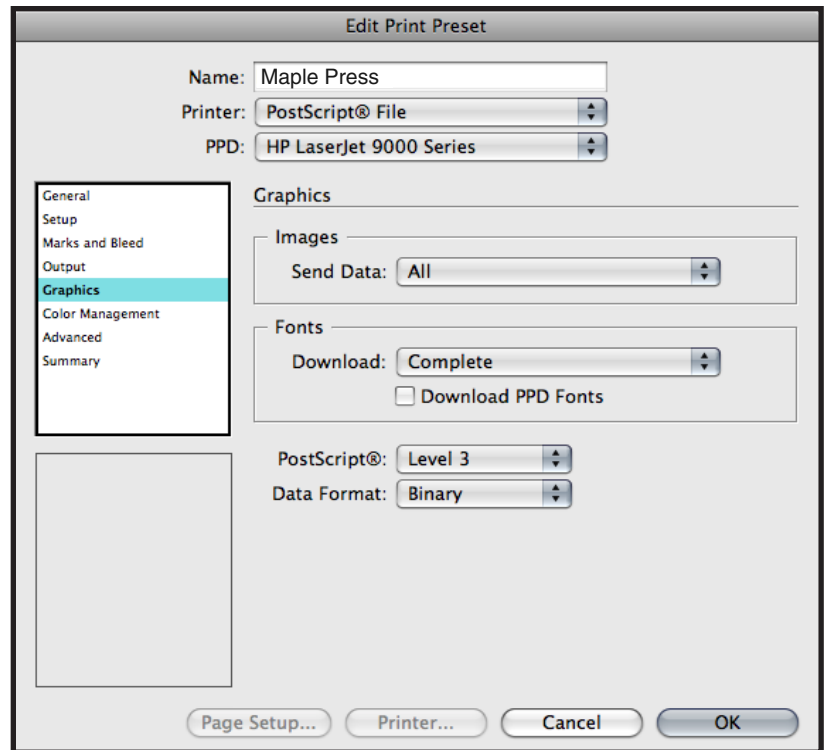
## Output:

- Select *Color*: Composite Leave Color Unchanged (suitable for process and spot color work color work)
- Select *Flip*: None
- Select *Screening*: Default
- *Inks*: Review list to verify no unintended colors are included (simply disabling output of undesired colors could result in elements missing from final file)



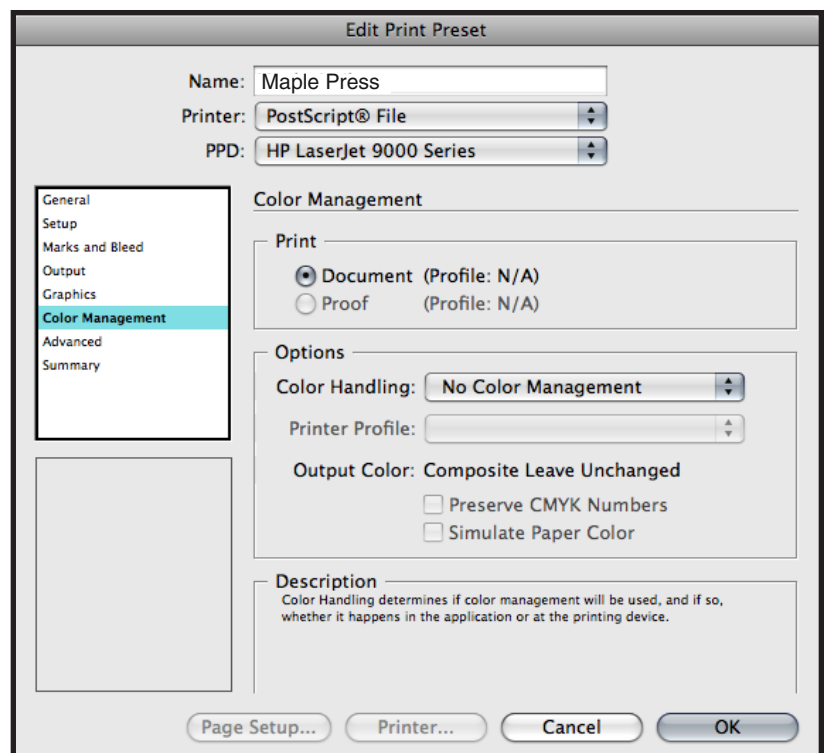
## Graphics:

- Select *Send Data*: All
- Select *Download*: Complete
- Deselect *Download*: PPD Fonts
- Select *PostScript*: Level 3
- Select *Data Format*: Binary



## Color Management:

No selections needed in this window, due to the output setting to “leave color unchanged.” Other settings could result in final file being translated to an unwanted color space.



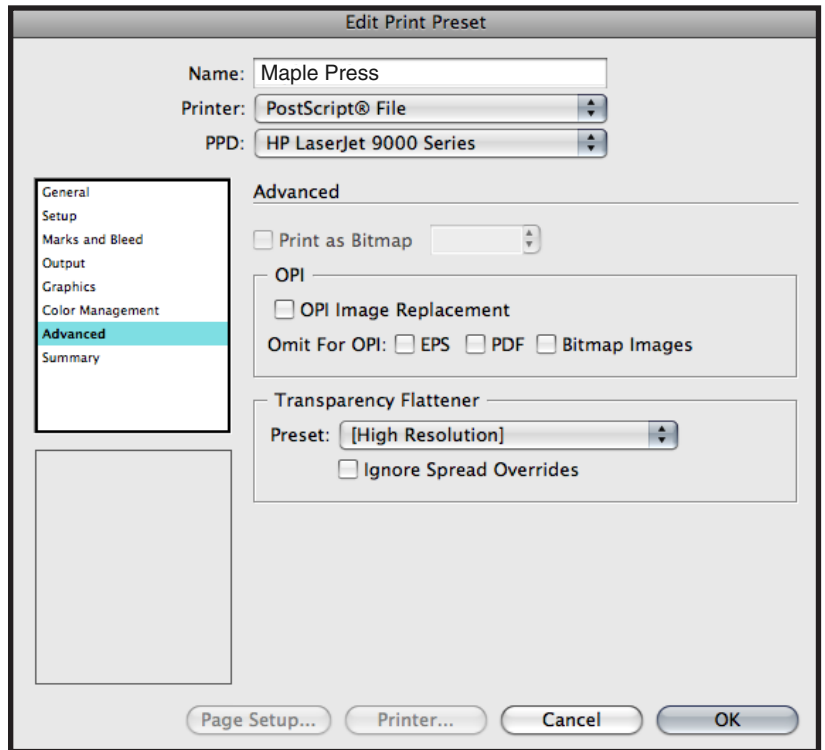
**Advanced:**

Transparency Flattener

- Select *Preset*: High Resolution

Step one of selecting Print Presets is now complete.

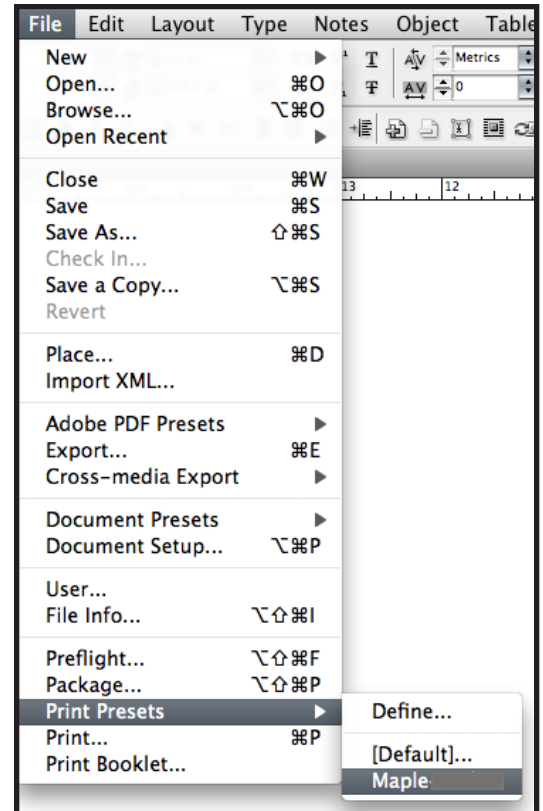
- Select *OK* to save new settings.



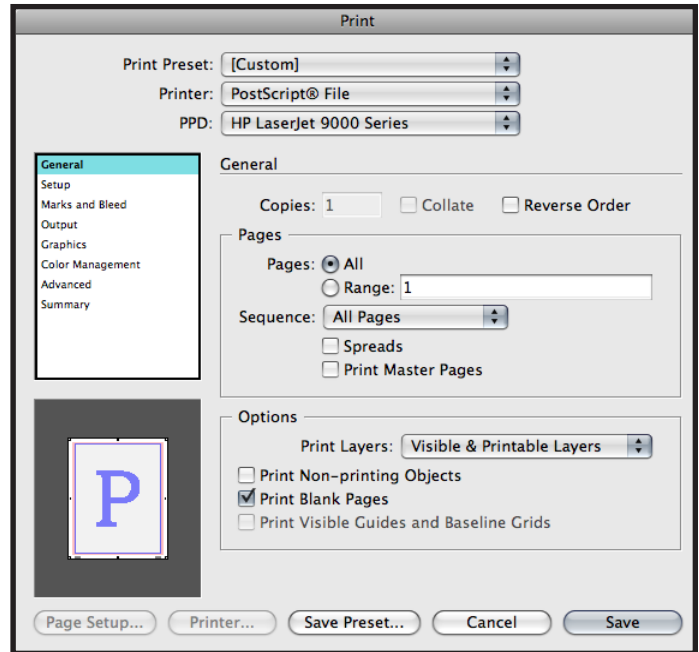
**Step 2.**

**Writing a Postscript file using Predefined Print Preset:**

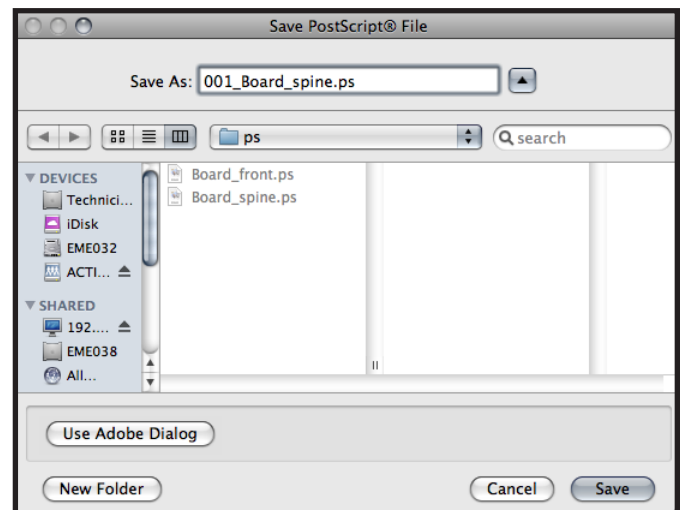
- With your InDesign file open, select the Print dialog box within InDesign, select Print Preset defined during the previous steps. File>Print Presets>Maple Press



- The preset loads and displays all the settings. Do not change any settings at this point. Just click on the Save button.



- Name the PostScript file and select the destination folder.



### Creating a PDF file from Postscript:

Once the PostScript file is created, follow recommended standards for Distiller at the following web site link:  
<http://www.maplepress.com/prepress/DistillingInstructions.html>